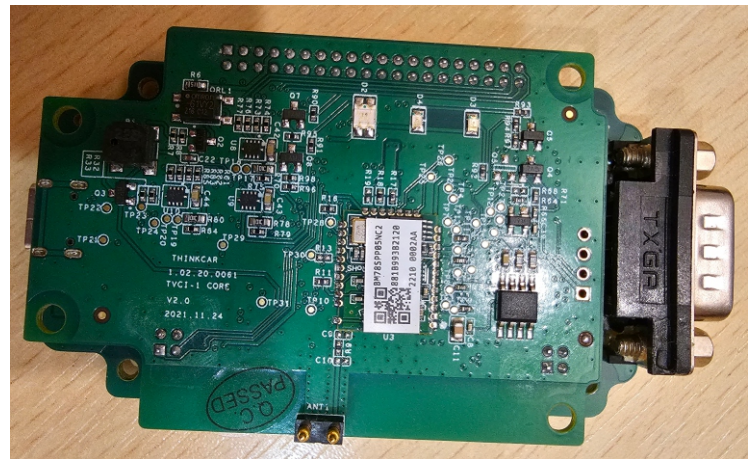
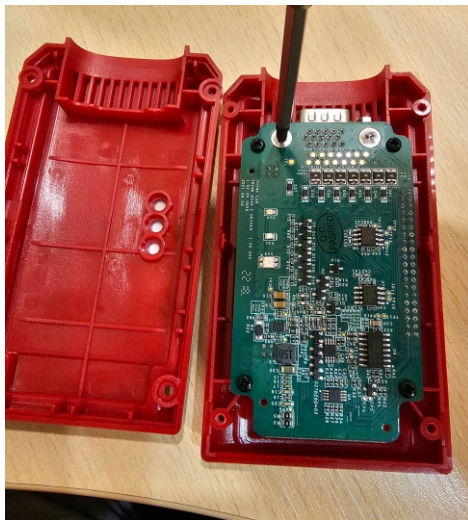
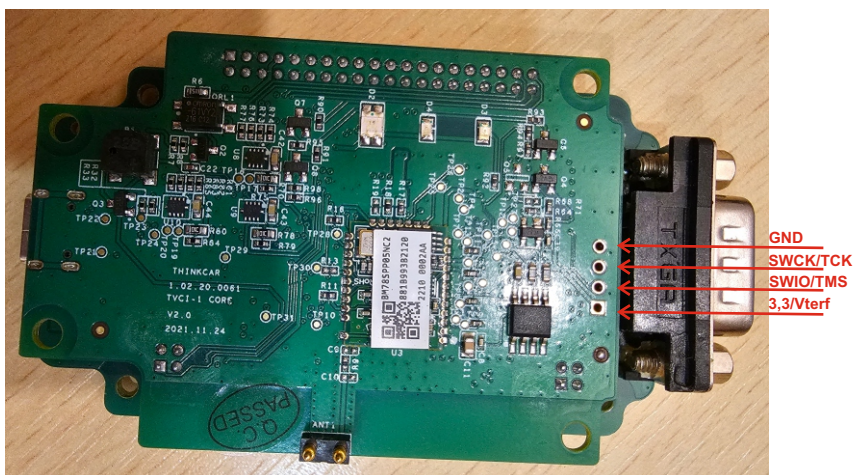


We remove the rubber, unscrew 4 screws

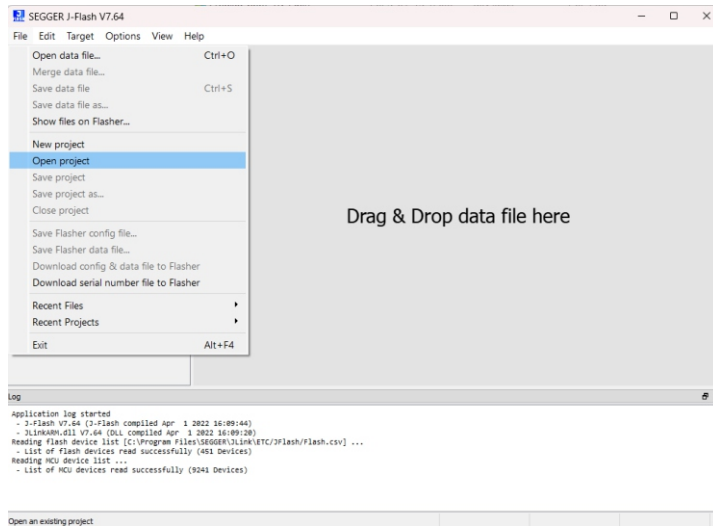


and again unscrew 4 screws

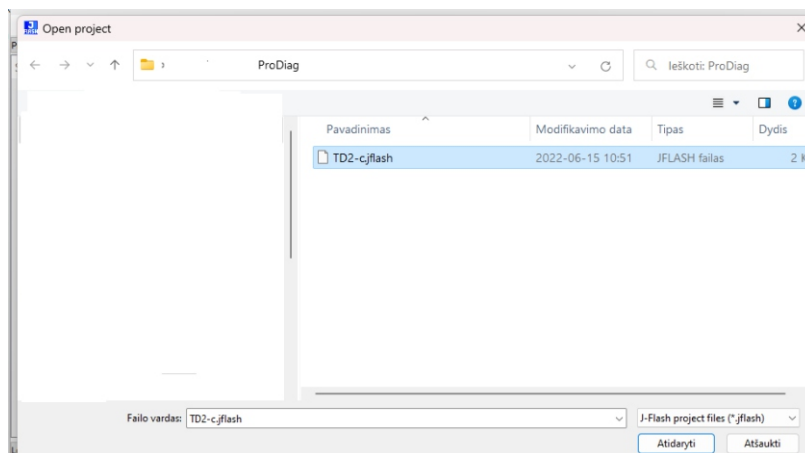


Connect to Jlink V9 or newer version

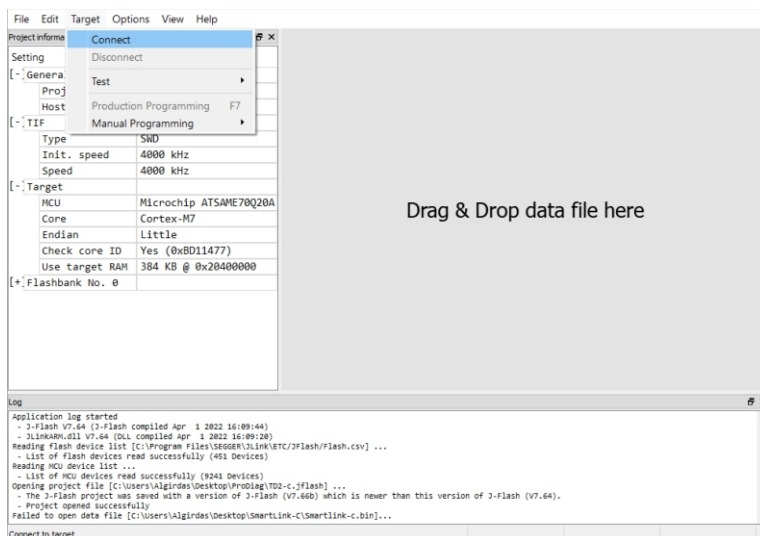
Start program J-Flash and push Open project



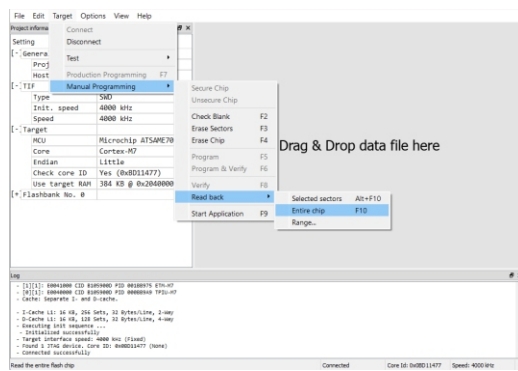
in ProDiag folder select TD2-c.jflash



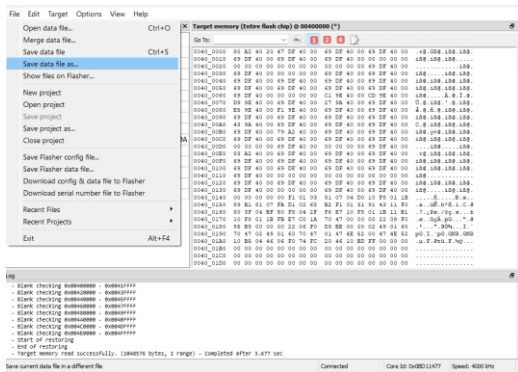
in program select Target/Connect



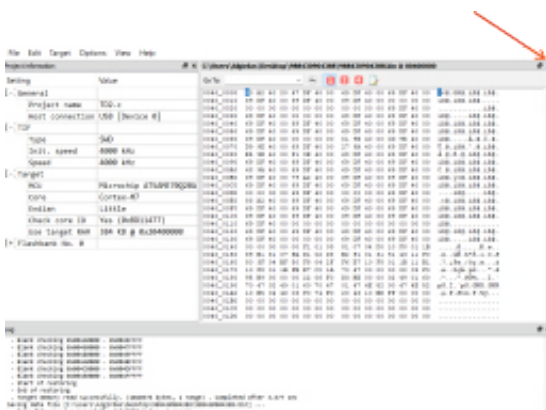
after Jlink connect to adapter , read your chip;
Target/Manual Programming/ Read back/ Entire chip



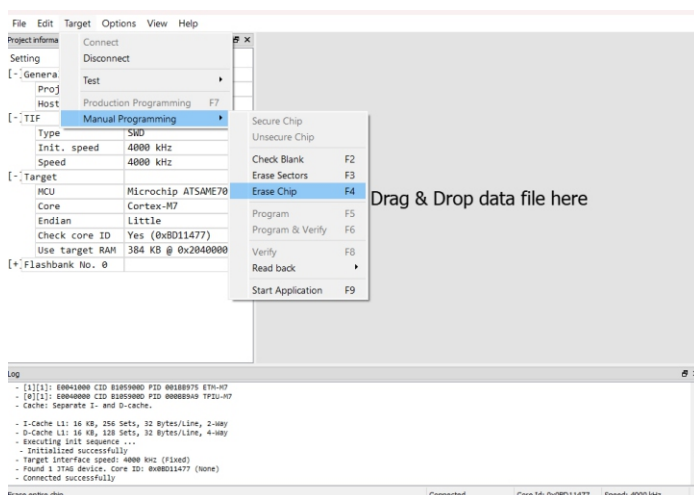
after read your chip, please save it



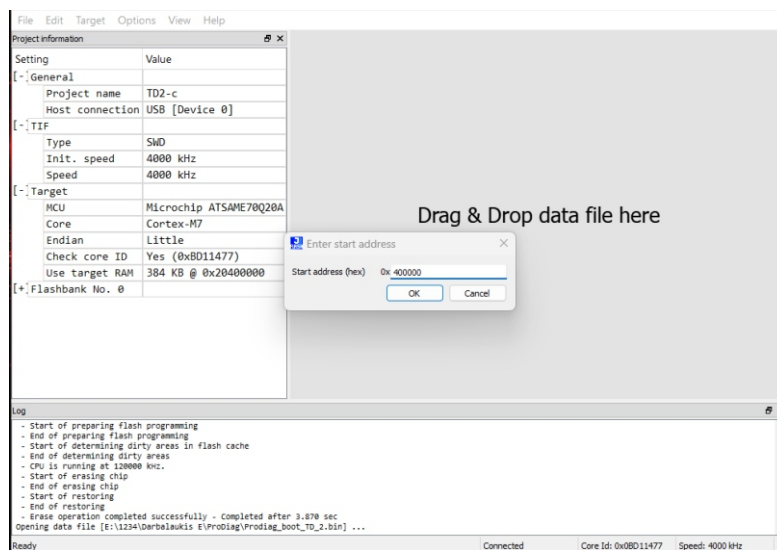
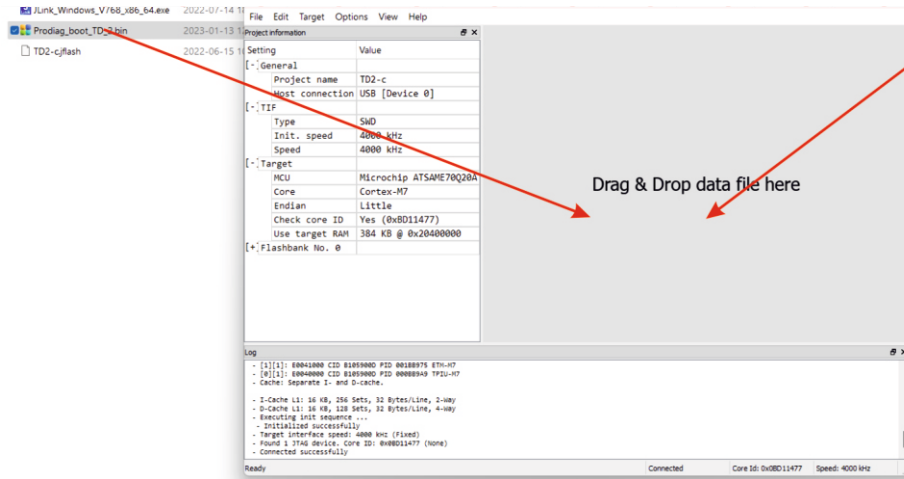
after save , press x



Now erase your chip: Go to Target/Manual Programming/Erase chip

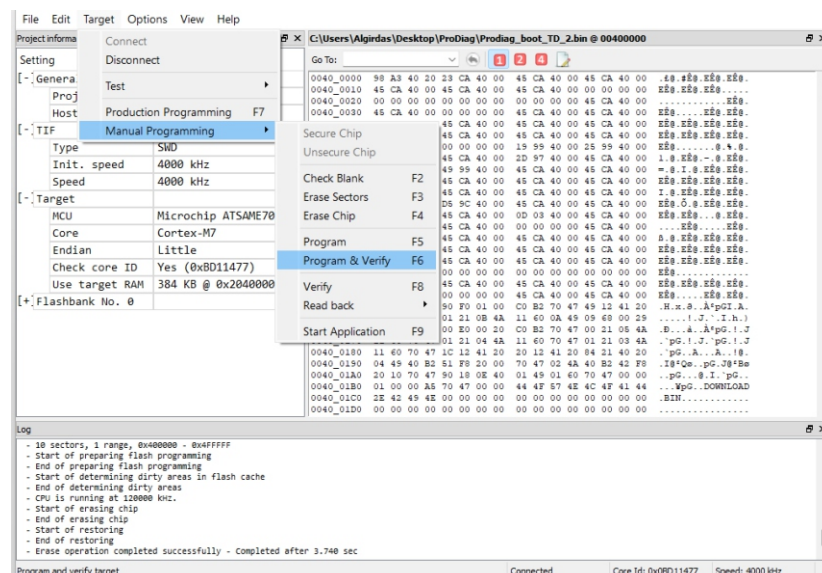


From the Prodiag folder,
drag the file Prodiag_boot_TD_2.bin here



OK

Now go to : Target/Manual Programming/ Program
& Verify



If everything is fine, you will see this message

